

FEATURES

43RD ANNUAL GENERAL MEETING

The 43rd Annual General Meeting was successfully convened on 28th July 2016, 6.00 pm at Dewan Tan Sri Hamzah, Royal Selangor Club, Bukit Kiara Sports Annex, Jalan Bukit Kiara, Kuala Lumpur. There were 14 voting member-institutions attending the AGM.

The presiding chairman Dato' LAr Ismail bin Ngah made a presentation to highlight on BIM events and activities during his term 2015-2016. Past President, Sr John S.C. Loh was nominated to be the Election Chairman and there were no objections from other members.

There were no contests for all the positions.

Dato' LAr. Ismail bin Ngah was re-elected as the President for the second term.

The following were duly elected:

President	: Dato' LAr. Ismail Bin Ngah (ILAM)
Deputy President	: Mr John C.P. Chang (MPS)
Vice President	: Dato' Abd Radzak bin Abd Malek (CILTM)
Vice President	: Dr. Wan Rasidah binti Kadir (MSSS)
Honorary Secretary	: Ir. Gunasagaran Kristnan (IEM)
Honorary Treasurer	: Dato' Dr Vincent Ng In Hooi (VAM)
Ordinary Member	: Sr Yee Ia Howe (CIOBM) Prof. Madya Hj Ahmad Suhaimi bin Ismail (MIP) Dr. Paul Chelliah (VAM) Mr Venkateswaran R (MIHRM) Sr. Wan Ainon Zuraiha binti Khalid (RISM)
Internal Auditor	: Ir. Yau Chau Fong (IEM) Dr. David Chin Tuck Yuan (IRIM)
Immediate Past President	: Prof. Dr. Mohd Khanif Yusop (AIM)(invited ex-official)

12 AUGUST 2016



43rd Annual General Meeting,

28 July 2016



12 AUGUST 2016



**43rd Annual General Meeting,
28 July 2016**



12 AUGUST 2016

BIM INTER-PROFESSIONAL GAME - BOWLING

The BIM Inter-Professional Game – Bowling was successfully held on 24 July 2016, 11.00 am at Bukit Kiara Equestrian and Country Resort, Kuala Lumpur. About 10 teams from Member-Institutions were registered to participate on this competition.

It was the second year of the event organized by Balai Ikhtisas Malaysia which previously held in May last year. The purpose of this event is to provide opportunities for professional members to interact and to network with professionals of other Member-Institutions. The results for the Bowling Game are as follows:

No.	Team	1 st Game	2 nd Game	Total Score
1.	CILTM	355	424	779
2.	MSSS	326	307	633
3.	RISM 1	298	310	608

The prize for the best team (CILTM) has been given during BIM Hari Raya Open House on 28 July 2016, 8.00 pm, after the 43rd Annual General Meeting at Royal Selangor Club, Bukit Kiara Sports Annex, Kuala Lumpur.

BIM Inter-Professional Game – Bowling 24th July 2016



12 AUGUST 2016



12 AUGUST 2016

ABOUT MEMBERS

HIS STORY OF MERDEKA & KUALA LUMPUR BY DATO' AR. HAJEEDAR ABDUL MAJID

GALERI PETRONAS and PAM (Pertubuhan Akitek Malaysia) are pleased to invite you to the talk by Dato' Ar. Hajeedar Abdul Majid.

Seats are limited. Registration is required.

Date/Day : 13 August 2016, Saturday

Time : 10.30 am to 12.00 pm

Venue : Galeri Petronas, Level 3, Suria KLCC, Kuala Lumpur.

IEM ENGINEER'S RUN 2016



Date : 14 August 2016 (Sunday)

Venue : Start/Finish - University of Malaya

Starting Time : 7.30am start for all categories

Entry fees : RM 47.70 (inclusive of 6% GST)

Category Participation

Run Code	Category	Age Group	Starting Time	Fee
A	Men's open (10 km)	Above 17	7.30 am	RM 47.70 (Inclusive of 6% GST)
B	Women's open (10 km)	Above 17	7.30 am	
C	Boy's Run (5 km)	Above 10 and below 17	7.30 am	
D	Girl's Run (5 km)	Above 10 and below 17	7.30 am	
E	Men's Run (5 km)	Above 17 and below 40	7.30 am	
F	Women's Run (5 km)	Above 17 and below 35	7.30 am	
G	Men's Veteran (5 km)	Above 40	7.30 am	
H	Women's Veteran (5 km)	Above 35	7.30 am	

NOTE

Family members is your immediate relatives which are; spouse or parents or sibling or child. The Organizing Committee reserves the right to cancel your registration for the IEM Member's rate if you failed to clarify your relationship with the Member.

T-Shirt Size Guide Lines

Des	XS	S	M	L	XL	XXL
Chest	36in	38in	40in	42in	44in	46in
Length	26in	27in	28in	29in	30in	31in

The organizer will try to accommodate, but will not promise fulfilling runner's experience for t-shirt size. T shirt sizes will be distributed on first come first serve basis

Prizes, Medals & Regulations

1. Registrations are non-refundable & non-transferable.
2. Age qualification is taken as at 31st December 2016.
3. The run is officially over 1.5 hour after the start time.
4. There will be two drink stations on the 10km route and one on the 5km route.
5. All participants will receive certificate at the end of the run.
6. Finisher's medal will be awarded to all finishers.
7. Prize winners are required to produce identity card or other valid documents within 15 minutes of finishing your run at Race Secretariat.
8. Toilet amenities are available at the University of Malaya from 7.00am.

Runners Entitlement:

1. Dry Fit Round Neck T-Shirt
2. Bib Number
3. Finisher Medals
4. Certificate of Participation

12 AUGUST 2016

Prizes:

Trophies will be awarded to following winners:

1. Category A - First 5 finishers
2. Category B - First 5 finishers
3. Category C - First 3 finishers
4. Category D - First 3 finishers
5. Category E - First 5 finishers
6. Category F - First 5 finishers
7. Category G - First 5 finishers
8. Category H - First 5 finishers

SPECIAL PRIZE:

BEST ENGINEER'S COSTUME!!

(Participants are required to register at Race Secretariat before and after the run)

Lucky Draw

* There will be a lucky draw after the run.

Registration / Contacts

IEM Secretariat - Tel: 03 - 7968 4001/4002 - Email: myiemrun@iem.org.my

Mr. Tan Zhi Howe - Organizing Committee - Tel: 012 - 768 3885 - Email: zhihowe@gmail.com

Mr. Low Kar King - Organizing Committee - Tel: 016 - 930 4592 - Email:
karkinglow@gmail.com

Mr. Kenny Chia - Organizing Committee - Tel: 016 - 513 0656 - Email: kcken91@gmail.com

Race Entry Pack Collection

Date : 5th August 2016 - 6th August 2016

Time : 10.00am – 6.00pm (Friday - Saturday)

Venue : The Institution of Engineers, Malaysia

Bangunan Ingenieur, Lot 60/62,
Jalan 52/4, Peti Surat 223 (Jalan Sultan),
46720 Petaling Jaya, Selangor Darul Ehsan

Tel: 03 - 7968 4001/4002

Fax: 03 - 7957 7678

Email : myiemrun@iem.org.my

Required documentation for collection:

1. Present your IC for verification during collection.
2. Payment receipt (online or manual).
3. List of the participants & IC no and the person collecting on behalf. (for bulk/group collection)
4. No race kit will be issued on the event day

12 AUGUST 2016

GBI - NEW TAX INCENTIVES FOR GREEN BUILDINGS SEMINAR



NEW TAX INCENTIVES FOR GREEN BUILDINGS

20 August 2016 (Saturday)
8.30am - 1.00pm
Evergreen Laurel Hotel, Penang

FREE ADMISSION



Date/Day : 20 August 2016, Saturday
Time : 8.30 am to 1.00 pm
Venue : Evergreen Laurel Hotel, Penang

Please send your [Registration Form](#) to: wanain@greenbuildingindex.org OR
Fax: +03-2284 2566

ILAM - MGBC GBI PROFESSIONAL SERIES: SEMINAR ON INTEGRATED STORMWATER DESIGN SOLUTIONS

Date/Day : 24 - 25 August 2016 (Wednesday / Thursday)
Venue : Day 1 - Seminar : Vivatel Kuala Lumpur
Day 2 - Project Visits: Putrajaya & Cyberjaya
Fees : RM450/ Pax -ILAM & MGBC Member
RM550/ Pax - Non Member

REGISTER ONLINE: www.ilamalaysia.org

CURRENT ISSUES

MPS CALLS FOR FREEZE ON PHARMACY PROGRAMMES

The Sun Daily, 2 June 2016

PETALING JAYA: The Malaysian Pharmaceutical Society (MPS) has called on the government to impose an immediate moratorium of at least five years on pharmacy programmes due to the severe lack of training posts for those who graduated in Malaysia.

Seeking the proposed freeze, MPS president Amrahi Buang said, hundreds of pharmacy graduates are left stranded with no idea of what the future is and will soon be a problem faced by thousands of graduates in the coming years.

"We are concerned about this issue as a pharmacy graduate must undergo a one-year Provisionally Registered Pharmacist (PRP) training before he or she can be registered and practice as a Fully Registered Pharmacist (FRP)," he added.

He said MPS was grateful to the Health Ministry for revising the guideline for liberalisation of PRP training to the private sector that also allow the training of Public Services Department scholars.

However, he added, the moratorium needs to be looked besides reverting the policy on PRP training to a year and be paid allowance as a trainee instead of a salary as an employee.

He also said the current mandatory service of one year for FRP be removed and to instruct universities to reduce the number of intake by 50% starting this year besides among others to seriously undertake a proper human resource study in regard to the number of pharmacists needed until 2050.

ACCORD PHARMACISTS THEIR RIGHTFUL ROLE TO DISPENSE MEDICINES

Source: Malaysiakini.com, 16 June 2016

The healthcare industry is supported by an array of disciplines each with its own training curriculum, standards and job descriptions - be it nursing, physiotherapy, dietetics, pharmacy or medicine. Each discipline supports the other and it is the seamless integration of the various disciplines that leads to optimal health care support for consumers and patients.

However the universal norm that doctors diagnose and prescribe while pharmacists audit and dispense is amiss in Malaysia and the notion to accord pharmacists their rightful duty to dispense medicines has always been met by contentious objections from the doctors.

But what is most bizarre and beyond comprehension is the Health Ministry's stand on the issue in that they would not support dispensing separation.



On what basis does the Health Ministry deny a profession of its fundamental role?

There are currently 14,500 pharmacists in the country with about 20 pharmacy schools producing approximately 1,200 pharmacy graduates annually. So the oft repeated argument over the last decades that there are insufficient pharmacists in the country to support dispensing separation does not hold water any more.

On the contrary we have a potential situation on our hands with pharmacists unable to obtain employment owing to the lack of demand for them in the absence of dispensing separation. To avoid this situation let us just close down all pharmacy schools and stop the training of pharmacists in the country with immediate effect

12 AUGUST 2016

since the Health Ministry has declared that it will not support dispensing separation, hence denying pharmacists of their fundamental role.

Medication safety has been identified by the World Health Organisation and other global Healthcare agencies such as US Food and Drug Administration, UK's National Health Service as one of the main priority in addressing patient safety challenges.

In Australia it was reported in 2006 that about 10.4 percent of the 17.5 million people who make 95 million visits to their general practitioner annually will experience an adverse drug event - about one million being moderate or severe and 138,000 requiring hospitalisation.

A 2007 US Institute of Medicine report showed that medication errors originate most often during the medication prescribing process. At least half of these prescribing errors are detected and corrected when pharmacists review the safety and appropriateness of the medication.

Having the same doctor prescribe and dispense as in Malaysia eliminates that safety net. Currently at private clinics no one checks for the safety and appropriateness of the prescription and any potential for medication-related problems. The individual who dispenses the medications in these clinics does not have any pharmacy knowledge and any health-related qualification.

We recently highlighted a case to the Health Ministry where the medicines were wrongly labelled and the child nearly died. No one took any accountability for the event.

This brings us to the very important point of auditing and keeping records on usage of medicines. How are records kept when there is no separation of roles to ensure a check and balance? How are patients assured that the medicine being prescribed is the optimal treatment for the condition?

12 AUGUST 2016

‘Attractive bonus schemes to doctors’

It is common knowledge that pharmaceutical companies offer attractive bonus schemes to doctors to drive the sales of their products. In these bonus schemes the price is lowered with bulk purchase of a product. This would mean a higher margin for the doctor. Hence dispensing separation will lead to a potential loss of income for doctors.

This is one of the main reasons doctors are fighting tooth and nail to hold on to a function which is not within their legitimate scope of work. When doctors derive a substantial proportion of their income from the sales of the medicines, wouldn't their professional judgment be compromised?

It is mind-boggling how the Health Ministry came to a decision not to support the urging for dispensing separation. A relevant question to ask is where is this precedent coming from? Are we looking at the developed world for best practices or are we looking at developing countries where lack of resources may still warrant the need for doctors to dispense.

Let's look at the case of registration of new drugs. Reference is taken from countries like the US, UK, Canada, Australia, Sweden and France - all of which have dispensing separation. Even Taiwan and South Korea have moved towards dispensing separation in recent years. So why are we not following the precedent of these developed countries in the case of dispensing separation? Even developing countries like Indonesia and India have long practiced dispensing separation.

We have a national aspiration to attain developed country status by 2020. Yet in a very fundamental area of healthcare we are lagging behind and taking the retrogressive stand of not recognising the fundamental role of pharmacists. The debate has gone on for far too long. The arguments against dispensing separation used today are no different from those mentioned decades ago and are no longer relevant.

It's time the Health Ministry took the bull by the horns and separate the roles of prescribing and dispensing in the interest of consumers and patients. As custodians of public health it is their duty to do so.

SM MOHAMED IDRIS is president, Consumers Association of Penang (CAP).

A NEW LANDMARK IN BANGSAR

The EdgeProperty.com, 26 July 2016



THE Malaysian Institute of Architects' (PAM) new headquarters in Jalan Tandok, [Bangsar](#), called PAM Centre, exudes a minimalist feel. With its façade covered in dark aluminium screen, the 7-storey building features concrete slabs, exposed pipes and raw brick walls, bearing a resemblance to modern industrial offices in Brooklyn, New York.

PAM has injected new life into the once-abandoned site, which, together with a 4-storey building, was formerly leased by jeweller The Carat Club. Details of the site and the original building, believed to have been built in the 1970s, are scant, but they were said to be once privately owned by a local Indian family.

In October 2010, PAM, through its PAM Education Fund, decided to purchase the site, and initially, earmarked it for an architect-driven centre for contemporary arts in the same spirit as the National Art Gallery and Museum of Modern Arts. The transaction was concluded in March 2011. Fast forward a year later, and there was a change of plans. PAM was in the market for new premises and the Jalan Tandok site was then chosen as its permanent home.

"I think the site fits us because it is very architectural. Our aim is to make this centre a new landmark and, perhaps, a new icon in Bangsar," says PAM president Mohd Zulhemlee An.

A forward, inspired design

Spanning 1.12 million sq m, the new PAM Centre is poised to become one of the greenest buildings in the posh Bangsar neighbourhood. It is situated directly across from the Universiti Kuala Lumpur hostel, with numerous existing and upcoming restaurants along the street.

The institute allocated RM17.5 million for construction cost. "One of the challenging things about the project was the budget, although we were fortunate to have sponsors and donations from our members," says Zulhemlee. "Another challenge would be car parking space. Nonetheless, we managed to fit in 45 parking bays."

12 AUGUST 2016

Set for a soft launch on July 29 and an official launch in October, the centre has a built-up of 3,782 sq m (40,709 sq ft), within which, is a 2,000 sq ft auditorium, a grand lobby, a council boardroom, an exhibition hall, eight meeting rooms, a cafeteria, a specialised book store, PAM's main secretariat office, two floors of office space to be tenanted and a rooftop that is set to have its own skybar, with an unobstructed view of the city skyline.



Right off the bat, the new PAM Centre is full of character. The building features a façade-enveloping external eggcrate louvre device that provides shade against the glare and heat and acts as a “breathable skin”. The minimalist theme is consistent throughout its exteriors and interiors. The design aims to create fluidity, flexibility and structural honesty.

The longish industrial building features a large PAM emblem engraved on a concrete wall at its entrance — a homage to simplistic designs. Its interiors are a concoction of flat concrete slabs, steel columns, brick walls and open spaces. Despite its simplicity, the building is packed with slick finishes, from its acrylic-made desks to its stately, cutting-edge marble conference table.



The mastermind behind the design is HMA & Associates, which came out tops from 55 submissions received for the New PAM Centre Architectural Design Competition held in April 2012. It is evident that HMA's winning submission lies in its stacked layouts and green solutions.

“The building is inspired by the separation of spaces and the climate, to go hand in hand with the institute's green efforts. It is what we call ‘the space between’. It has the same principles as a traditional Malay house, where layouts are stacked and ventilation is prioritised.

12 AUGUST 2016

For, example both ends of every floor feature laminated glass windows to aerate the common areas of the building, which allows a lot of energy saving. The main offices are the only parts of the building that are air-conditioned,” notes HMA & Associates partner Mohd Heikal Hasan.

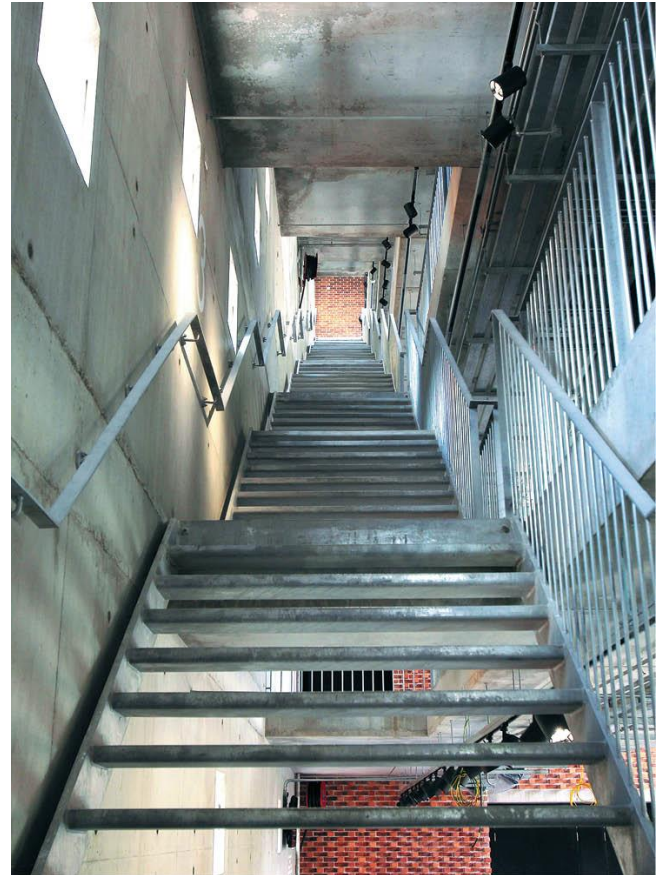
The centre is set to meet Platinum rating requirements under the Green Building Index. Some of the building’s green features are energy management system (EMS), rainwater harvesting system, 25kWp photovoltaic system, high-COP variable refrigerant flow (VRF) air-conditioning system, energy-efficient T5 and LED lighting, water-efficient sanitary fittings, hybrid vehicle-charging station, vertical greenery and a herb garden.

To save energy, the design features a clever play of natural lighting in its placement of skylights, shades and exposed punched holes in the walls. “The lights installed in the buildings are also sensed to save energy,” says Heikal.

PAM has maintained three storeys of the original structure, in which the cafeteria is housed. “For this section, we purposely left the original beams to give the building more character.

Apart from the original structure, the rest of the building is beamless — its support lies in its overall structure,” Heikal explains.

The centre boasts plenty of workspaces and areas that are easily convertible to allow more room for future activities and exhibitions. The building also features long display panels along its corridors to exhibit artworks.



One of the distinctive traits of the centre is the straight-flight steel staircase. The visually transparent-looking stairs create cross-ventilation and a sense of flow and unification of all the floors and spaces in the building.

Forming the spine of the building is the sheer wall made of off-form concrete, which acts as a backdrop to the stairs and has many punched holes to allow added ventilation.

Another striking feature is the allocation of breakout spaces on selected floors, which feature planted trees and additional work and hangout spaces. “One of the things that attracted us to the design was its elegant and efficient solutions. The stepped atriums alongside the long single flight of stairs open up the area and create a dramatic central area that consolidates the entire building,” says PAM’s Zulhemlee.

Walking the talk

“We are very excited about moving into the new building. It will be good for PAM, its members and the industry as we now have a prominent permanent building rather than something that is temporary. Moving into the new building ... it’s a different feeling, compared with our former home in Jalan Tangsi,” he says.



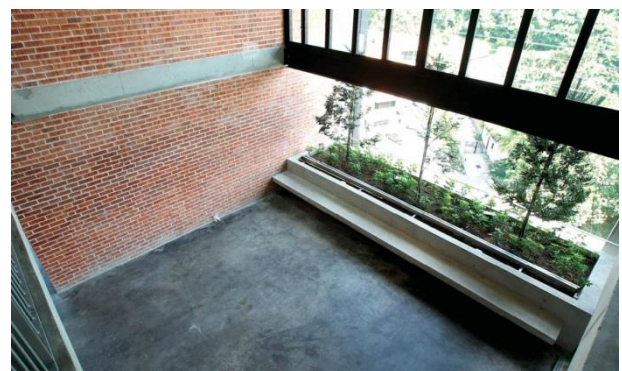
PAM was the custodian and tenant, from 1973 to mid-2012, of the quaint and iconic Loke Hall in Jalan Tangsi. The neoclassical-style mansion, built in 1907, is a stark contrast to the modern and industrial-looking new PAM Centre. “We were very fond of Loke Hall, but at the same time, we were having problems maintaining the building as we were short of funds. When DBKL (Kuala Lumpur City Hall) issued a notice asking PAM to vacate the premises and had its own plans for

alteration works, we knew we had to find a new suitable alternative as our permanent home,” says Zulhemlee.

He believes the new centre is a chance for architects to “walk the talk” in promoting forward designs and green initiatives. “This centre is an opportunity for us to exemplify what good architecture is as well as showcase green features. We would like to create greater awareness and educate the public on the industry, and the components of a true green building.”

PAM is already in talks with potential tenants, he adds. “We would like to bring in tenants — mostly construction-based companies. It would be good for these industry players to be housed in our building so that it is more convenient to work with each other.”

Moving forward, PAM is eager to open its new centre to the public. “We intend to run programmes and architecture exhibitions and have full resources at this centre to educate the public as well as architectural students. We are excited that we can host our own events at our own venue. PAM is confident that this will be ‘the’ centre of architecture in the country,” he says.



“There are still some misconceptions about the profession. At times, we overlook the importance of architecture, when in actuality, architecture has the ability to improve our lives. The profession comes with responsibilities. We hope the centre will flourish and educate the people in the industry as well as the public. It will be our way of improving both architecture and art, thus creating a more cultured society. Both architecture and art are intertwined. Just like the old saying by P Ramlee, *“Irama dan lagu tak boleh dipisahkan”* (rhythm and music cannot be separated),” he muses.

BUYING THE RIGHT WATER HEATERS

The Star, 30 July 2016

THE Institution of Engineers, Malaysia (IEM) is gravely concerned over the death of the Korean university student who is believed to have been electrocuted while having a hot shower in a bathroom of her family home in Seremban a few days ago. This is a matter of grave concern for the IEM because similar incidents have happened in the past few years.

Currently, IEM is unable to verify the actual reasons for the electrocution as the available information is not sufficient to conclude the causes of the accident.

However, the electrocution may occur due to equipment failure and subsequently the unavailability or defective electric shock safety protection consisting of residual current devices (RCD) and earthing to protect the water heater system.

The Electricity Regulations 1994 specifically require residential installation to be mandatorily installed with appropriately rated RCD and earthing based on its use. The purpose of the RCD is to detect any dangerous leakage of current caused by defective equipment. Hence, the correct installation and maintenance of RCD and earthing is critical to ensure the safety of consumers.

In 2014, the Energy Commission (Suruhanjaya Tenaga) issued a circular which is concurrent with the Electricity Regulations 1994 to urge developers to practise the correct use of the RCD especially for the water heater equipment.

All power supply to the water heater equipment or wet areas has to be mandatorily equipped with a RCD with a sensitivity of less than or equal to 10mA. This information is in the Energy Commission's (EC) website.

In addition, the Electricity Regulations 1994 (Amendment 2013) enables the EC to regulate electrical equipment in line with safety requirements as well as to safeguard consumers' interests. Thirty-four types of electrical equipment are being regulated and one of these is the water heater. These regulated electrical equipment are to be tested to the specified standards to fulfil the safety requirements.

Consumers are also advised to only purchase water heaters with the SIRIM-ST approval stickers.

IEM, via its Electrical Engineering Technical Division, together with other related associations and stakeholders such as the Electrical and Electronic Association of Malaysia (TEEAM), is currently assisting the EC to formulate a code of practice for installation and maintenance of water heaters. With this code, which is in the final stages of formulation, IEM hopes to work with the EC and TEEAM to create awareness of the importance of the proper design, installation and use of water heater to consumers.

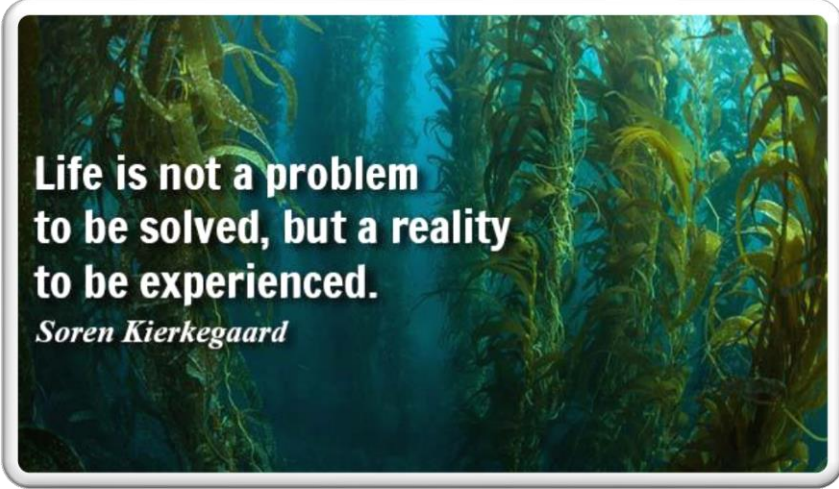
IR TAN YEAN CHIN

President,

Institution of Engineers Malaysia

LIFE QUOTES

1.



**Life is not a problem
to be solved, but a reality
to be experienced.**

Soren Kierkegaard

2. Life isn't about finding yourself. Life is about creating yourself.

George Bernard Shaw

3. The good life is one inspired by love and guided by knowledge.

Bertrand Russell

4. Life is a series of natural and spontaneous changes. Don't resist them - that only creates sorrow. Let reality be reality. Let things flow naturally forward in whatever way they like.

Lao Tzu

12 AUGUST 2016

5. Life is a song - sing it. Life is a game - play it. Life is a challenge - meet it. Life is a dream - realize it. Life is a sacrifice - offer it. Life is love - enjoy it.

Sai Baba

6. The aim of life is to live, and to live means to be aware, joyously, drunkenly, serenely, divinely aware.

Henry Miller

7. Fortunately analysis is not the only way to resolve inner conflicts. Life itself still remains a very effective therapist.

Karen Horney

BIM MEMBER INSTITUTIONS

- Malaysian Pharmaceutical Society (MPS)
- Royal Institution of Surveyors Malaysia (RISM)
- The Institution of Engineers Malaysia (IEM)
- Pertubuhan Akittekn Malaysia (PAM)
- Malaysian Medical Association (MMA)
- Malaysian Dental Association (MDA)
- Malaysian Institute of Planners (MIP)
- Veterinary Association Malaysia (VAM)
- Malaysian Institute of Interior Designers (MIID)
- Malaysian Society of Soil Science (MSSS)
- Malaysian Association of Social Workers (MASW)
- The Plastics & Rubber Institute of Malaysia (PRIM)
- Agricultural Institute of Malaysia (AIM)
- Institut Rimbawan Malaysia (IRIM)
- The Chartered Institute of Building Malaysia (CIOBM)
- Institute of Landscape Architects Malaysia (ILAM)
- Institute of Internal Auditors Malaysia (IIAM)
- Institut Bahan Malaysia (ICOMM)
- The Chartered Institute of Logistics And Transport Malaysia (CILTM)
- International Institution of Plantation Management (IIPM)

CORPORATE AFFILIATE

- Malaysian Association of Productivity (MAP)
- Malaysian Institute of Human Resource Management